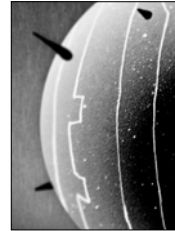


Film Synopsis:

MOVING ILLUSTRATIONS OF MACHINES

Inspired by the cloning and birth of Dolly the Sheep, MOVING ILLUSTRATIONS OF MACHINES is a painstakingly detailed animated film. It consists of hand drawn ink artwork completed over a span of nearly four years. Describing the convergence of man and technology, it is a surreal look at a mechanical world where human eggs are genetically reprogrammed by ominous machines.



Director's Biography:

JEREMY SOLTERBECK

Jeremy moved to California in 1994 to attend film school. Since then he's explored the highs and lows of production, the madness of animation, and the excitement of the festival circuit. In 2000 he decided to put all of these together under one roof as the post & production boutique, CANOPUS PROJECTS. Since then, he's hatched award-winning shorts, produced cutting edge music videos, created stunning TV spots, and established himself as one of the most exciting new talents in the business.

